

Kearny Mesa Veterinary Center

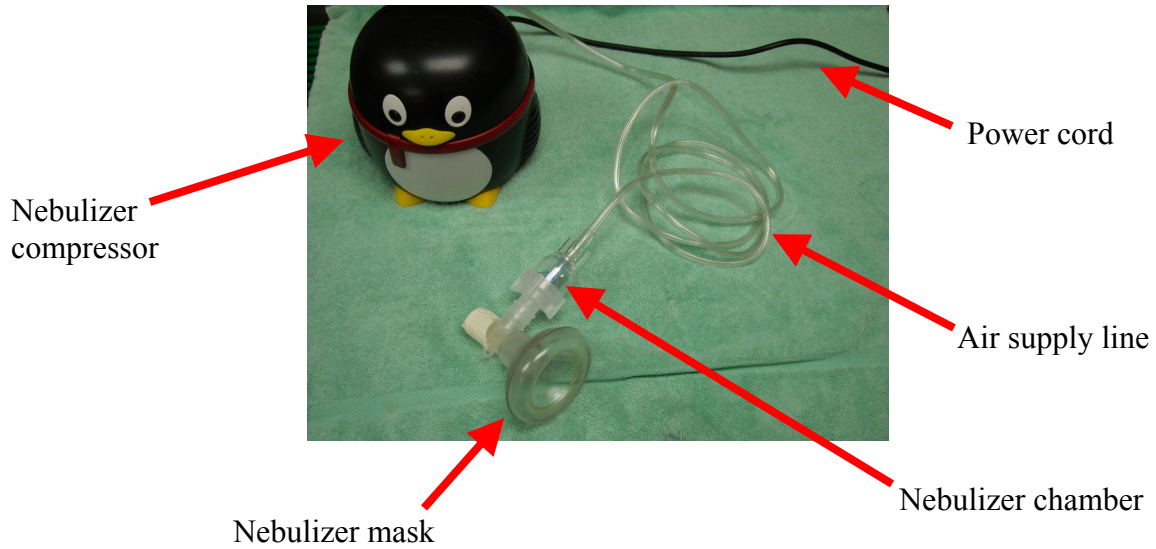
Quality – Compassion – Experience

Craig Marvil, DVM Avi Shaprut, DVM Emily Cross, DVM
7677 Ronson Rd Suite 100 San Diego, CA 92111 (858) 279-3000



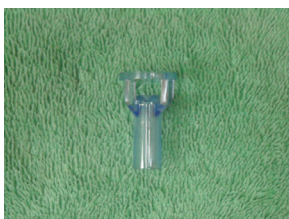
NEBULIZING YOUR ANIMAL

FAMILIARIZE YOURSELF WITH THE DIFFERENT PARTS:



THE NEBULIZER APPARATUS:

The nebulizer apparatus consists of these four parts:



Chamber Core



Nebulizer Chamber



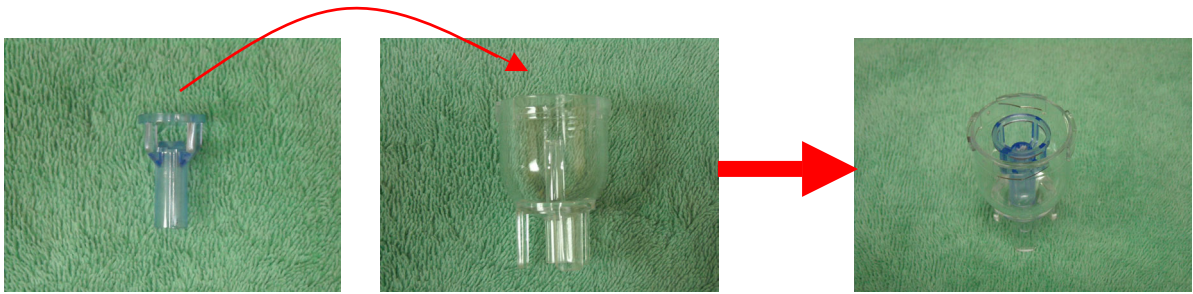
Chamber Top



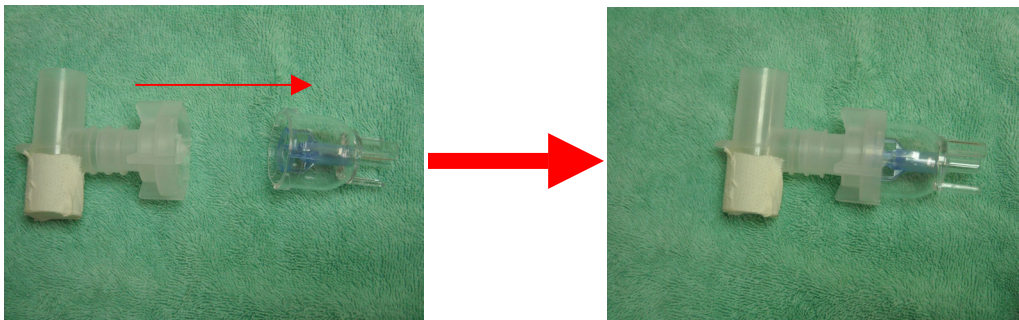
Nebulizer Mask

ASSEMBLING THE NEBULIZER APPARATUS:

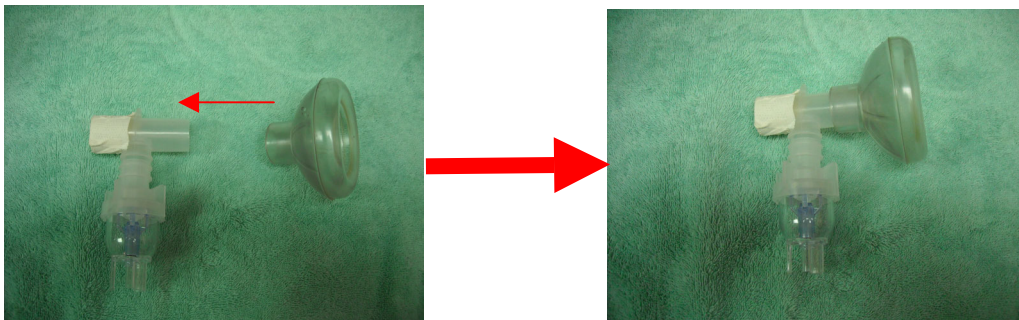
First, place the small plastic core into the nebulizer chamber:



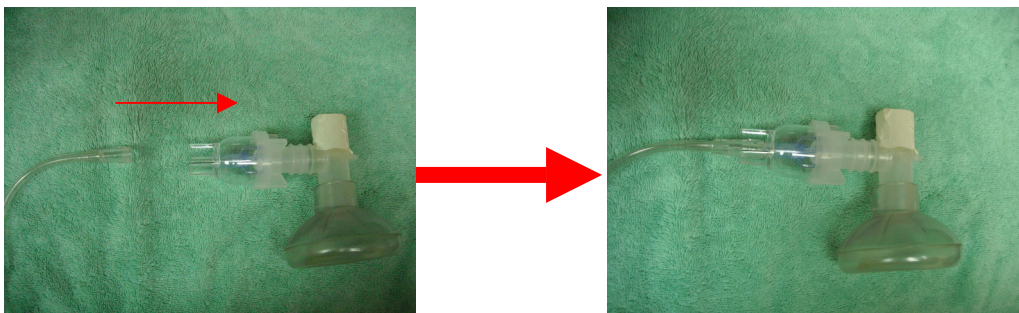
Second, twist and lock the top of the chamber in place:



Third, attach the mask to the top of the chamber assembly:

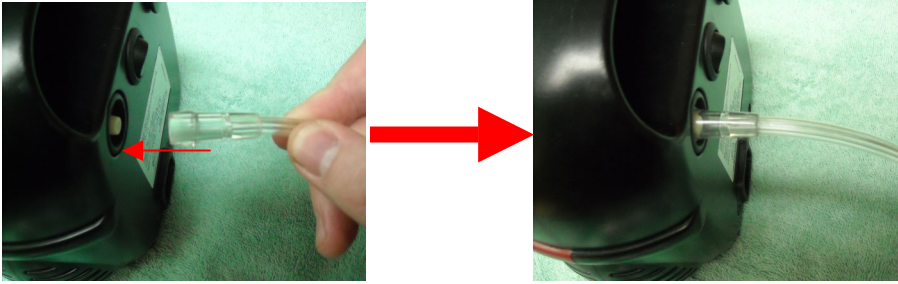


Lastly, attach the air supply line back to the bottom of the chamber:

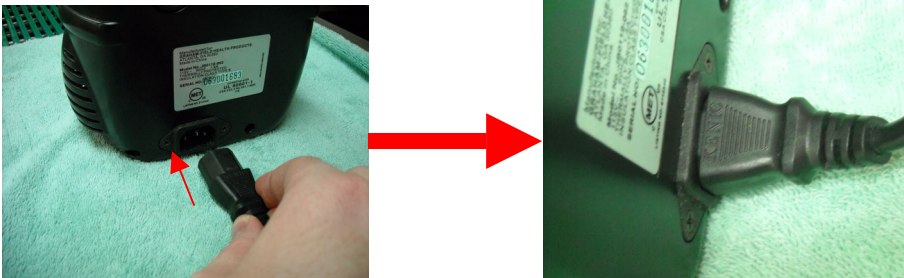


ASSEMBLE THE NEBULIZER COMPRESSOR:

First, attach the air supply line to the back of the nebulizer:

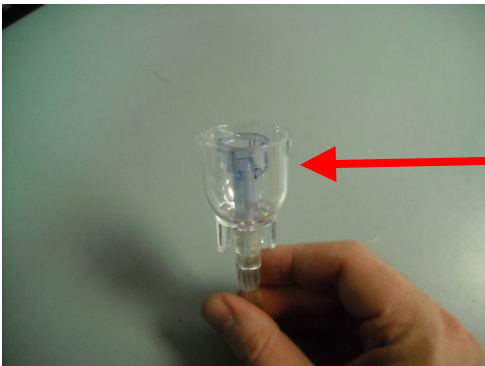


Second, attach the power supply cord to the nebulizer compressor:



FILLING THE NEBULIZER CHAMBER WITH MEDICATIONS:

First, remove the top of the nebulizer chamber:



This is where the medications are to be placed.

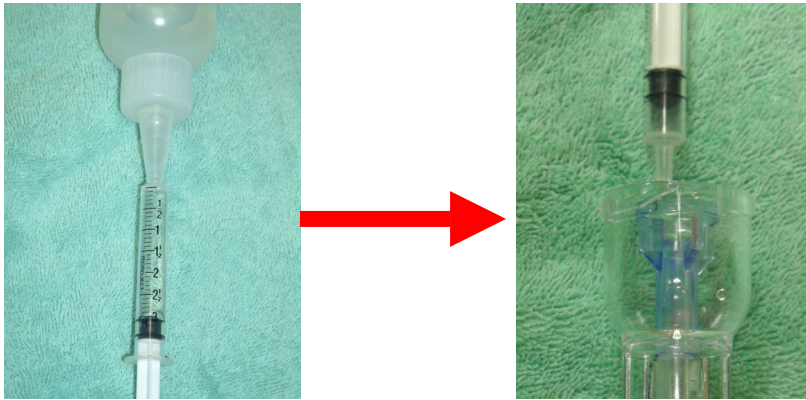


Saline

Gentamicin

There are two medications that have been provided. One is saline and the other is gentamicin. The gentamicin medication is an antibiotic and is only to be used in the nebulizer chamber once per day in the morning. The saline solution is the main medication and is used every time an animal is nebulized.

Once the top of the chamber is removed, draw up 3 ml of saline in the syringe provided, then put the saline into the nebulizer chamber.



If the nebulization treatment is also going to include the gentamicin antibiotic, this too is placed into the nebulizer chamber along with the saline solution. The most effective way to obtain the prescribed amount into the syringe provided is to remove the rubber top from the tube containing the gentamicin, place the syringe at the bottom of the tube and draw up a lot of the gentamicin. Remove the syringe from the tube and then squirt back into the tube any excess gentamicin. Then place the prescribed amount of gentamicin into the nebulizer chamber.

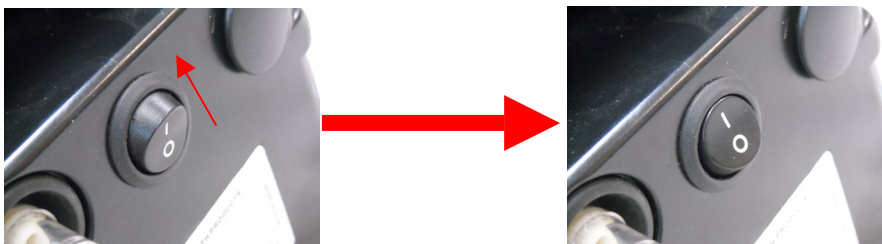
After all medications have been placed into the nebulizer chamber, replace the top of the chamber:



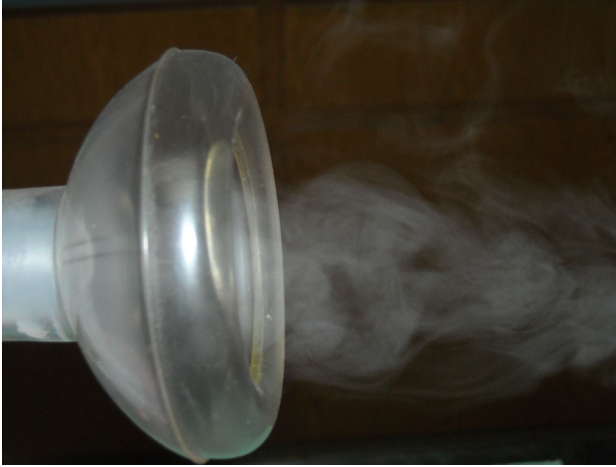
NEBULIZE YOUR ANIMAL:

Once all the parts are assembled and the medications have been placed inside the nebulizer chamber, you can nebulize your animal.

First, turn the nebulizer compressor on:



A fine vapor should be produced from the mask:

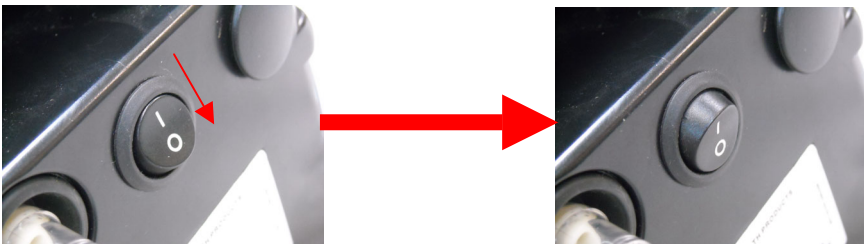


To nebulize your animal, place the mask near your animal's nose and mouth to allow them to breath in the vapors produced.



It is not necessary for your animal's nose and mouth to be covered by the mask. Simply holding the mask in front of your animal's nose and mouth is sufficient.

You should nebulize your animal for 10 minutes. This is the typical amount of time 3 ml of saline will last. Once that time has elapsed, turn the nebulizer compressor off.



After nebulizing, coupage your animal to further loosen the material in the lungs. This involves firm pats on either side of your animal's chest just after nebulizing. Coughing is normal after performing this.

It is recommended that after every use, these four parts of the nebulizer chamber be separated and cleaned. Make sure the air supply line is separated from the nebulizer chamber before the nebulizer chamber is cleaned. This will prevent any liquid from getting into the line.